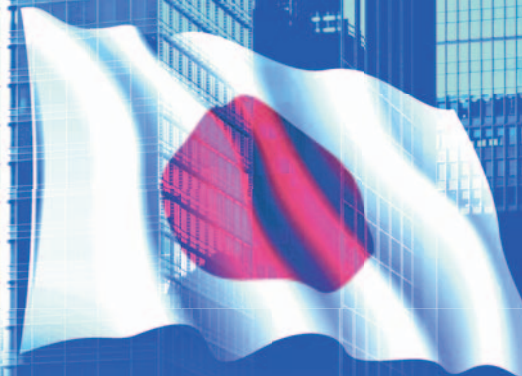


# International **Auto** Aftermarket **EXPO**



## ***The 17th International Auto Aftermarket EXPO 2019***

*The only international trade show in Japan specialized in the auto aftermarket*

**Date** March 13th (Wed.) – 15th (Fri.), 2019

**Venue** Tokyo Big Sight

### What's International Auto Aftermarket EXPO?

**International Auto Aftermarket EXPO is the convention  
that would activate Automotive Aftermarket!**

- Gathering all in one who become committed to automobile related business
- The only aftermarket exhibition in Japan that participate in about 270 exhibitors from both inside and outside Japan
- Transmitting the productive information by demonstration, conference, exhibit and presentation

Exhibit / Presentation



Demonstration



Seminar



### IAAE2018 Result

#### Number of Visitors

Registered Visitors **15,041**

Counted Visitors **37,276**

#### Number of Exhibitors and Booths

Companies & Associations **276**

Booths **521**

※Countries & Regions China, Taiwan, Korea, Singapore, Malaysia, Italy

## Exhibit Profile

Auto parts & Accessories

Auto detailing & Maintenance

Car trading & Distribution

Maintenance & Repair

Safety & Security

Commercial & Large-size vehicle

Business proposal & Support

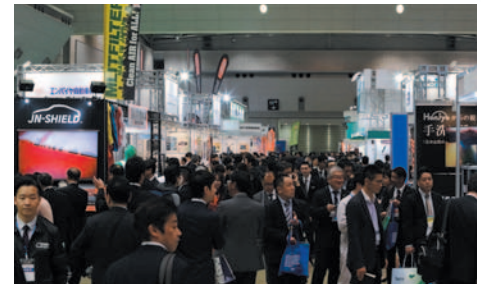
Eco-related

Other

## Visitor Profile

### Business Operators related to Auto Aftermarket

Trading companies / Auto part trading companies / Various buyers / Transportation companies / Parts & Accessories manufactures / Car accessory shop & DIY shop / Electric appliance shops / Maintenance & Plating & Painting shop / Detailing shop / New car dealers / Used car dealers / Automobile recycling companies / Insurance companies & adjusters / Auto manufactures / Motorcycle manufactures / Parking operators / Leasing companies / Media etc.



## Exhibition rules

### Exhibition fee and booth configuration

Exhibition Space: JPY **329,400** per booth  
(tax included, decoration fee does not included)

Package Booth: JPY **415,800**  
(tax and exhibition space fee for one booth included)

- Booth size is 9 square meters (3m x 3m) per booth.
- In principle, **only a raw space is provided**. If there is/are adjoining booth(s), a 2.7 m partition panel/panels (system panel, white color) will be installed. (See the example below.)
- Exhibitors are required to decorate their booths according to the Guideline for Exhibitors, which will be distributed at the beginning of January.
- Please contact the Show Management Office if you would like to use your original decoration plan.

- Booth size is 9 square meters (3m x 3m) per booth.
- Package booths are available for the convenience of the exhibitors. There are some types of package booths by content, design, and size.

Basic package booth includes items described below.

Company name : Exhibitor's name and booth number on the parapet

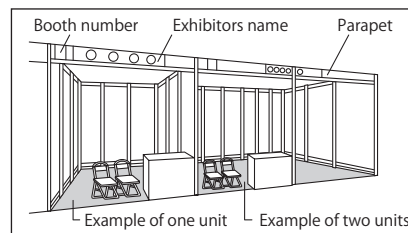
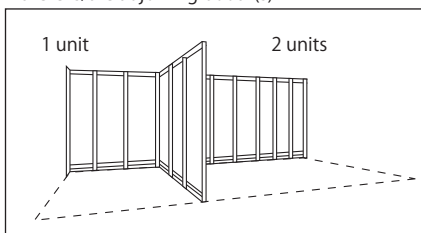
Flooring : Punch carpet

Lighting : 2 x 40W fluorescent lights, 1 x 100W spot lamp

Furnishing : 1 x Reception counter (W900 x D450 x H750), 2 x Folding chairs

Electricity : 1 x Electric outlet (100v/750W), setup fee and electricity usage fee (up to 750w) included

If there is/are adjoining booth(s)



### Discount

Early bird: JPY10,800 per booth

IAAE2018 exhibitor: JPY10,800 per booth

### Deadline

Early bird: October 31, Wednesday, 2018

December 31, Monday, 2018

## Contact

### Overseas agents

Show Management Office has overseas agents in order to support both exhibitors and visitors from outside of Japan. Please contact the agents at the addresses listed below for inquiries.

**Taiwan**  
Taiwan External Trade Development Council Market Development  
Exhibition Services Section, 5-7F, 333 Keelung Rd., Sec. 1, Taipei 11012, Taiwan R.O.C  
Person in charge: Ms. Claire Jan  
TEL: 886-2-2725-5200 Ext:1587 FAX: 886-2-2757-6443

**China**  
SHANGHAI PINGHE CONSULTANTS-COMMERCIAL CO., LTD.  
Rm202 NO.49, 1351 LONG HUALING Rd, Shanghai 200442, China  
Mr. Wang zi qiang QQ: 175423954  
TEL: 137-0180-7032 E-mail: wangziqui0123@qq.com

### International Auto Aftermarket EXPO Show Management Office

c/o JC Resonance Co., Ltd. 3-3-2, Tsukiji, Chuo-ku, Tokyo 104-0045 Japan

TEL: +81-3-5565-1642 FAX: +81-3-5565-6909 URL: <http://www.auto-mobi-expo.jp/> E-mail: [office@iaae-jp.com](mailto:office@iaae-jp.com)